



W&H PEACOCK

AUCTIONEERS & VALUERS

BRI
BUSINESS RECOVERY AND INSOLVENCY



CRYSELCO
LIGHTING LTD

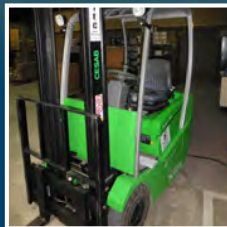
TIMED ONLINE AUCTION

Under instructions from Messrs P J Windatt & T E Guthrie
of BRI, the joint Liquidators of Cryselco Lighting Ltd

LIGHTING STOCK, FORKLIFT, RACKING, TOOLS & EQUIPMENT, COMPUTERS & OFFICE FURNITURE

BIDS CLOSING 11.00AM (SUBJECT TO STAGGERED TIMING AND THE TEN MINUTE RULE)

Tuesday 6th December 2016



TIMED ONLINE AUCTION

Under instructions from Messrs P J Windatt & T E Guthrie
of BRI, the joint Liquidators of Cryselco Lighting Ltd

LIGHTING STOCK, FORKLIFT, RACKING, TOOLS & EQUIPMENT, COMPUTERS & OFFICE FURNITURE

BIDS CLOSING 11.00AM (SUBJECT TO STAGGERED TIMING AND THE TEN MINUTE RULE)

Tuesday 6th December 2016

Including:

LIGHTING STOCK

A range of complete and component parts for domestic and commercial lighting installation including recessed fittings, Led panel and downlighters, luminaires, etc; Surface and suspended luminaires, T5 battens; Retail, Display and Accent lighting including spotlights, wallwasher fittings, pendant and other lights; Amenity Lighting including bulkhead and linear fittings; Industrial Lighting including non-corrosive luminaires; Emergency lighting control gear and many other items. Also a wide range of lighting control gear for light refurbishment and maintenance.

FORKLIFT, RACKING & FACTORY HANDLING EQUIPMENT

CESAB Blitz 150 electric counterbalance forklift truck with side shift and charger, Capacity: 1500kg; Range of hydraulic pallet trucks; platform trollies and barrow; two mobile warehouse step ladders; various aluminium step ladders; Brecknell platform scales (to 180kg); Lewis aluminium scaffold tower; 32 bays orange steel medium duty pallet type racking comprising approximately 41 frames, 150 beams and slatted timber shelving; 3 bays light weight duty boltless racking; Approximately 325 tubular steel stackable stillage frames; Dexion bolted angle racking and tabling; steel double door cupboards, multi drawer cupboards; packing benches, tape dispensers and associated items; banding machine; aluminium work platform and many other items

www.peacockauction.co.uk

TOOLS & WORKSHOP EQUIPMENT

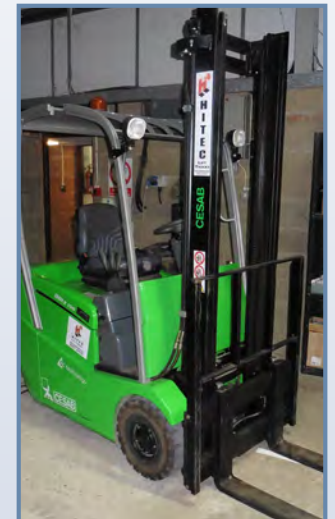
HPC type SH26A receiver mounted two stage air compressor; airline susis with retractable lines; air operated hand tools; Hand operated toggle press; Clare model: A433R10 electric testing units and other test equipment; Range of hand held electric tools including Bosch ½" drills, 110 volt transformer, extension reel, De Walt cordless drill, etc; Tucker No 6 riveter;

COMPUTERS AND OFFICE FURNITURE

Two Dell PowerEdge T410 servers; a range of Power.com Cooler Master Windows 10 computer towers with monitors & keyboards; Dell Vostro, Dimension and 1 Dell OptiPlex Windows XP computers; Zebra Z4M plus label printer; various inkjet printers; Siemens telephone system with Dell PowerEdge T605 server; A suite of office desks and associated in grey; various steel 4 drawer filing cabinets; swivel office chairs; reception suite; oak & glazed bookcase; Mahogany side table; reproduction office chair in button back leather; Sepele double pedestal office desk; Oak meeting table and pedestal desk; canteen equipment, etc; Stratford Cashier office safe; pool table and other furniture & equipment.

**Viewing: Saturday 3rd and Monday 5th December
9am – 4pm each day**

At the company's premises 274 Ampthill Road, Bedford, MK42 9QJ



FORKLIFT, WAREHOUSE EQUIPMENT & RACKING

Lot 1

Cesab Blitz 150 electric counter balance forklift truck with charger and side shift Serial Number: CE277577 Capacity: 1500kg at 500mm

Lot 2

Matlock 2500kg hydraulic pallet truck

Lot 3

TUV 2500kg hydraulic pallet truck

Lot 4

TUV 2500kg hydraulic pallet truck

Lot 5

Coolie extended fork 2 tonne hydraulic pallet truck (fork length 1.8m)

Lot 6

5 various metal framed and wooden bed platform trolleys

Lot 7

HPC receiver mounted 2 stage air compressor Type: SH26A Serial Number: 113716

Lot 8

Set of Brecknell platform scales (to weigh 180kg by 50g intervals)

Lot 9

Lewis aluminum scaffold tower approx. 2m by 1.5m with associated out riggers and accessories (extends to approx. 5m high)

Lot 10

Set of 10 tread blue mobile warehouse steps

Lot 11

Set of 8 tread orange mobile warehouse steps

Lot 12

Tubesca heavy duty aluminum 7 tread step ladder

Lot 13

Four Clima aluminum warehouse ladders, 2 x 12 tread and 2 x 10 tread

Lot 14

Approx. 32 bays of orange steel medium duty pallet racking by Redirack Types: SD250 and SD170 Comprising approx. 41 frames (1m wide x 3.6m high), 150 beams (2.8m long) plus some slatted shelving

Lot 15

4 assembled bays of light duty boltless racking in red comprising approx. 7 frames (1.2m wide x 1.8m high), 40 beams (1.8m long) plus some galvanized shelving

Lot 16

Approx. 88 3ft x 5ft tubular steel stackable stillage frames

Lot 17

20 4ft x 4ft orange stackable stillage frames, some with detachable mesh sides

Lot 18

The remaining tubular steel stackable stillage frames comprising approx. 175 being mainly 3ft x 4ft

Lot 19 - 30

Spare Lots

Lot 43

7 E-Tap carton tape guns

Lot 44

Air drill with air suzie and a Desouter retractable reel

Lot 45

Air drill with air suzie and a Compar balancer retractable reel

Lot 46

Air drill with air suzie and a Compar balancer retractable reel

Lot 47

Bosch model GSB13RE professional 240v drill

Lot 48

2 Bosch model GSB13RE professional 240v drills

Lot 49

Sure air tools 3 eighths inch reversible angle drill with suzie

Lot 50

Hand tool, socket and driver sets, record plane, mini grease gun, clamps and sundries

Lot 51

Sure air tools air riveter and a Sealey model SA31 air riveter

Lot 52

Sure air tools 3 eighths inch angle drill, blower and air line

Lot 53

Kennedy and another soldering iron plus solder and grease

Lot 54

Clare comprehensive test station with probes and a range of tester connectors Model: A443R10/203B/AM/L Serial: 855A1

Lot 55

Clare comprehensive test station with 2 probes and a connector Model: A433R10/203B/AM/L Serial: 83796A1

Lot 56

Clare comprehensive test station with probes and a range of tester connectors Model: A443R10/203B/AM/L Serial: 42336A1

Lot 57

Clare Safe Test Luminaire with digital display and probes Serial Number: 026988A1

Lot 58

Rabone Chesterman vintage leather and brass tape measure with a Chesterman vintage leather and brass tape measure and an ultra lens with case and vintage batteries and a 1000th of an inch gauge with case

Lot 59

3 various digital thermometers, 1 by Comark, 1 by Digitrone 2006T and a Micron Electronics with case

Lot 60

AVO digital AVO meter model DA116 with case and a cased ohm meter and a cased loop impedance meter

Lot 61

4 specialist light meters including an Iso-tech model ILN350 digital light meter from 0 to 50,000 lux, Mini Lux 2 portable photo electric photometer with case and an SEI exposure photometer with case & GEC illumination meter with case

Lot 62

RS Iso-tech model IDM91 hand held digital multi-meter and a data precision model 938 digital capacitance meter with box

Lot 63

Box of assorted drills and bits

Lot 64

Cambridge Instrument vintage degrees Celsius wooden cased meter with a Clare kilovolt AC meter

Lot 65

British made type NKC1S 1kva 240v to 110v transformer with a 100v block tester

Lot 66

3 suzie airlines and airline filters

Lot 67

6 Desouter and other air drills and 3 descenders

Lot 68

Carroll and Meynell Ltd variable AC transformer with block tester rating 3 amps

Lot 69

Range of assorted vintage and modern hand tools, inspection lamp, riveters, taps, dies, wire strippers, bolt croppers etc

Lot 70

Black and Decker Scorpion multi-saw with case and a Bosch 240v electric drill

Lot 71

Pair of forklift extension forks (1.35m long)

Lot 72

Webb Prefect guillotine and one other

Lot 73

Komax model KAPPA 210 automatic wire stripper with digital controls, cut to length function, bench and decoiler

Lot 74

Band strapping machine with decoiler, qty of straps and a cling wrapping dispenser

Lot 75

Vintage wooden stool and a fire bucket

Lot 76

Pair of wooden vintage decorators trestles and a wooden ladder

HAND TOOLS & TEST EQUIPMENT

Lot 31

Run of assembly benching comprising bolted steel frames, chipboard work surface, metal channel and adjoined shelving (contents excluded)

Lot 32

14 assorted bays of bolted shelf racking (around the assembly area) (contents excluded)

Lot 33

Youngman Odd Job 600 folding aluminum platform step

Lot 34

Karcher model: WD3.200 industrial cylinder vacuum cleaner

Lot 35

Press and Shear toggle press

Lot 36

Tucker No 6 treadle press

Lot 37

2 assorted first aid kits and contents

Lot 38

2 Uniden twin walkie talkie sets with chargers

Lot 39

Tote tray with 2 Wolfcraft flexible driver shafts and an air drill with hose

Lot 40

2 vintage Record sash clamps

Lot 41

Record 4" bench vice

Lot 42

2 Marsh Taper model 5HT gum tape dispensers plus one other similar

Lot 77

2 5 drawer green multi-drawer units and a green cabinet

Lot 78

DeWalt model DC727 cordless 12v drill with 2 spare batteries, charger and case

Lot 79

2 Bosch mini battery drills with chargers and bits

Lot 80

2 Black and Decker dust buster's 6v cordless vacuums

Lot 81 - 100

Spare Lots

Lot 118

5 Cryselco recessed mains circular down light with polished reflectors, cut out diameter 224mm high frequency gear to fit 2 x 14w PL-R Eco (lamps not included)

Lot 119

4 Cryselco Hyperion LED rectangular suspended linear luminaires fittings, colour temperature 4000k, lumens 6700lms (74w)

Lot 120

2 Cryselco Meteor LED IP65 non corrosive luminaire for surface mounted or suspended fitting, colour temperature 4000k, lumens 3100lms (27w)

Lot 121

5 assorted Cyclone LED IP65 non corrosive luminaires, assorted lengths with poly carbonate casings

Lot 122

14 Cryselco recessed mains down lights with high frequency gear to fit 1 x 26w TC-DEL (lamps not included)

Lot 123

6 Cryselco recessed mains square down lights with high frequency gear to fit lamps 1 x 32w TC-TEL (lamps not included) cut out size 257 by 257mm

Lot 124

7 Lug commercial LED circular down lighters with adjustable gimbal with multi-faceted polish reflectors and 2000 lumens

Lot 125

4 Cryselco Astra LED circular down lights with polished aluminum reflector, colour temperature 4000k, 1650 lumens, cut out diameter 154mm

Lot 126

10 Cryselco Nova 2 square LED down lights with IP40, cut out size 150mm x 150mm, colour temperature 3000k, lumens 1750lms (20w)

Lot 127

9 Cryselco Nova 2 square LED down lights, cut out size 2000mm x 2000mm, colour temperature 3000k, lumens 2300lms (25w)

Lot 128

6 Cryselco Saturn LED down lights, 60 degree, colour temperature 4000k, 3250lms, cut out diameter 254mm

Lot 129

6 Cryselco Saturn LED circular down lights with colour temperature 4000k, 2850lms, (29w), cut out diameter 204mm

Lot 130

6 Cryselco Saturn LED down lights, colour temperature 4000k, 1750 lumens (20w) cut out diameter 154mm

Lot 131

8 Cryselco Star T5 linear luminaire low glare with high frequency gear to fit 1 x 28w T5 tube lamp (not included)

Lot 132

9 Cryselco linear surface mount prismatic light fittings with high frequency gear to fit 2 x 49w T5 tube lamps (not included)

Lot 133

12 Cryselco linear surface mount light fittings with opal cover and high frequency gear to fit 2 x 35w T5 tube lamps (not included)

Lot 134

11 Cryselco Meteor surface mount light fittings with poly carbonate cover and high frequency gear to fit 2 x 28w T5 tubes (lamps not included)

Lot 135

16 Cryselco Butterfly decorative luminaire with perforated metal diffuser, high frequency gear to fit 2 x 28w T5 tubes (lamps not included)

Lot 136

2 Cryselco Nova 2 square LED down lights with cut out diameter 200mm, colour temperature 4000k, lumens 2400

Lot 137

2 Cryselco Nova 2 square LED down lights cut out size 150mm, colour temperature 4000k, lumens 1800lms (20w)

Lot 138

3 Cryselco Callisto LED circular down lights with cut out diameter 110mm, colour temperature 4000k, lumens 1000lms (22w)

Lot 139

2 Cryselco Callisto LED down lights cut out diameter 110mm, colour temperature 4000k, lumens 1000lms

Lot 140

Cryselco Corona LED circular down light cut out diameter 176mm, colour temperature 4000k, lumens 2000lms

Lot 141

3 Cryselco Nembus 3w non maintained LED emergency down lights, 1 surface round, 2 surface square and 1 Nembus 3w maintained emergency down light recessed open area

Lot 142

8 assorted Cryselco light fittings including 2 LED square recessed and others

Lot 143

31 Cryselco Butterfly linear luminaire with white perforated metal diffuser and high frequency gear to fit 2 x 49w T5 tubes (lamps not included)

ASSEMBLED STOCK

Lot 101

13 boxed Cryselco lighting LED recessed Nova square light fittings. cut out size 185 by 185mm, colour temperature 4000k lumens 2250lm

Lot 102

13 boxed Cryselco white recessed mains circular down light fittings with open polished aluminum reflector to fit 2 by 18w TC-DL lamps (not included) and cut our size diameter 175mm

Lot 103

5 Cryselco Galaxy LED down lights with polished reflector and white bezel, cut out diameter 224mm, lumens 2000lm, colour temperature 4000k

Lot 104

4 Cryselco LED down lights with polished reflector, white bezel cut out diameter 224mm, colour temperature 4000k, lumens 3000lm

Lot 105

3 Cryselco Lighting Galaxy LED down lights and another 3 by 224mm cut out diameter with 4000k colour temperature, 2000 lumens and 1 by 4000k colour temperature with 1100 lumens

Lot 106

6 Cryselco Lighting white recessed mains down lights with high frequency gear and 6 section louvre to fit 2 by 18w TC-DEL lamps (not included)

Lot 107

9 Cryselco LED recessed Nova square lights with cut out size 185 by 185mm, colour temperature 4000k, lumens 2250lm

Lot 108

3 Cryselco white recessed mains circular down lights with high frequency gear, cut out diameter 175mm to fit 2 by 18w TC-DEL lamps (not included)

Lot 109

5 by Cryselco Galaxy LED down lights with polished reflectors, cut out diameter 224mm, colour temperature 4000k, lumens 1100lm

Lot 110

2 Cryselco recessed mains circular down lights with opal frosted recessed glass and cut out diameter 205mm, high frequency gear to fit 1 x 26w TC-LED lamps (not included)

Lot 111

3 Cryselco LED recessed Nova square light fittings with cut out size 185mm by 185mm, colour temperature 4000k, lumens 2250lm

Lot 112

10 Cryselco recessed mains circular down lights with polished reflector, white bezel and high frequency gear to fit 1 x 26w TC-DEL lamp (not included)

Lot 113

10 Cryselco recessed mains circular down lights with opal frosted recessed glass and high frequency gear to fit 1 x 26w TC-DEL lamps (not included)

Lot 114

4 Cryselco recessed mains circular down lights with high frequency gear to fit 2 x 26w TC-DEL lamps (not include)

Lot 115

5 Cryselco recessed mains circular down light with polished reflectors, cut out diameter 224mm high frequency gear to fit 2 x 17w PL-R Eco lamps (not included)

Lot 116

5 Cryselco recessed mains circular down light with white reflectors, cut out diameter 224mm high frequency gear to fit 2 x 17w PL-R Eco lamps (not included)

Lot 117

5 Cryselco recessed mains circular down light with white reflectors, cut out diameter 224mm high frequency gear to fit 2 x 14w PL-R Eco (lamps not included)

Lot 144

4 shorter Cryselco Butterfly linear luminaires with white perforated metal diffuser and high frequency gear to fit 2 x 36w T8 tubes (lamps not included)

Lot 145

10 Cryselco Meteor linear light fittings with high frequency gear and poly carbonate covers to fit 2 x 58w T8 tubes (lamps not included)

Lot 146

14 Cryselco Meteor linear lights with high frequency gear and poly carbonate case to fit 1 x 35w T5 tube (lamps not included)

Lot 147

9 Cryselco Meteor linear fittings with poly carbonate case and high frequency gear to fit 2 x 28w T5 tubes (lamps not included)

Lot 148

10 Cryselco Meteor linear light fittings with poly carbonate case and high frequency gear to fit 1 x 28w T5 tube (lamps not included)

Lot 149

7 Cryselco Meteor linear light fittings with poly carbonate case and high frequency gear to fit 2 x 54w T5 tubes (lamps not included)

Lot 150

12 Cryselco Butterfly decorative luminaire with white perforated metal diffuser and high frequency gear to fit 2 x 35w T5 tubes (lamps not included)

Lot 151

6 Cryselco LED surface light including 2 Neptune 2 circular LED 1920lms in white and another in silver, 1 Neptune 2 circular LED 1560lms and 2 Cryselco Gemini square LED bulk head lights 1450lms

Lot 152

32 Cryselco LED Comet panels, recessed edge lit ceiling panels each 4000k and 3600lms, 36w size 600mm x 600mm

Lot 153

13 Cryselco Eclipse 2 LED recessed ceiling panels, 600mm x 6000mm, 4000k, 3100lms, 22w

Lot 154

12 Cryselco Eclipse 2 LED recessed ceiling panels, 600mm x 6000mm, 4000k, 3100lms, 22w

Lot 155

13 Cryselco Eclipse LED panels, 3200lms, size 600mm x 600mm 156
6 assorted Cryselco LED panels including 3 Eclipse 2 x 4250lms, 1 Eclipse 2 4250lms 36w and 2 Cryselco Eclipse 2900lms

Lot 157

20 Cryselco Jupiter surface recessed light fittings with perforated metal diffuser and high frequency gear to take 1 x 40w TC-L tube (lamps not included)

Lot 158

18 Cryselco dust proof IP54 fittings with sealed prismatic diffuser high frequency gear to take 4 x 14w T5 tubes (lamps not included)

Lot 159

40 Cryselco Lux lay light panels 600mm by 600mm high frequency gear to take 4 x 14w T5 tubes (lamps not included)

Lot 160

34 Cryselco Lunar recessed 600mm light fittings with twin louvre and high frequency gear to take 4 x 14w T5 tubes (lamps not included)

Lot 161

40 Cryselco SLI recessed light fittings with prismatic diffuser and high frequency gear to take 4 x 14w T5 tubes (lamps not included)

Lot 162

20 Cryselco Lux T5 lay in recessed light panels with high frequency gear to take 4 x 14w T5 tubes (lamps not included)

Lot 163

10 Cryselco Lux T5 lay in recessed light panels with high frequency gear to take 4 x 14w T5 tubes (lamps not included)

Lot 164

8 Cryselco Jupiter perforated single surface light fittings with high frequency gear to take 1 x 40w TC-L tubes (lamps not included)

Lot 165

10 Cryselco Jupiter recessed lights with central perforated cover and high frequency gear to take 1 x 55w TC-L tube (lamps not included)

Lot 166

16 Cryselco SLI recessed light fittings and prismatic diffuser with high frequency gear to take 4 x 14w T5 tubes (lamps not included)

Lot 167

12 Cryselco Jupiter recessed fittings with perforated metal diffuser and inserted louvre and high frequency gear to take 1 x 55w TC-L tube (lamps not included)

Lot 168

21 Cryselco Jupiter double perforated metal diffuser recessed light fittings with high frequency gear to fit 2 x 40w TC-L tubes (lamps not included)

Lot 169

4 Lug long recessed light fittings with polished aluminum reflectors to fit 4 x 80w T5 tubes (lamps not included)

Lot 170

2 Cryselco Jupiter emergency light fittings with high frequency gear to fit 1 x 55w TC-L tube (lamps not included)

Lot 171

3 Cryselco Pendant light fittings

Lot 172

13 various industrial light fittings

Lot 173

2 large box light fittings with white poly carbonate diffuser

Lot 174

Qty of old stock light fittings including linear luminaires, LED recessed light fittings, panels etc

Lot 175

Qty of sodium bulbs and other assorted bulbs for older light fittings

Lot 176

Sample and display light fittings as fitted in the show room covering the range of assorted lights assembled by Cryselco including Eclipse electrical distribution panel

Lot 177

9 assorted fluorescent fittings

Lot 178 - 180

Spare Lots

COMPONENT AND OTHER STOCK

Lot 188

Data processing accessories multi-drawer component unit with drawers and contents of labeling's, tags and small fittings

Lot 189 - 190

Spare Lots

Lot 191

Large qty of LED lighting component parts (on 6 shelves)

Lot 192

Large qty of Pro L recessed down lighter bodies (on 3 shelves)

Lot 193

Large qty of Butterfly lamp diffusers, bodies and other component parts (contents of approx 12 stillages)

Lot 194

Large qty of square louvre bodies, diffusers and other components together with a range of Star linkable parts etc (the contents of approx. 14 shelves)

Lot 195

Large qty of recessed office lighting including Jupiter louvre single lamp bodies, diffusers etc (on approx. 13 pallets)

Lot 196

Large qty of mini strip light batons (incomplete) together with miscellaneous other luminaires and components (the contents of approx. 12 stillages)

Lot 197

Large qty of recessed single louvre square luminaire bodies (the contents of approx. 8 stillages)

Lot 198

Range of miscellaneous down lighter bodies, Luna lamp parts etc (the contents of 6 shelves)

Lot 199

Large qty of Butterfly fluorescent lamp bodies and diffusers in various sizes and styles (the contents of approx. 16 stillages in 1 row)

Lot 200

Large qty of fluorescent lamp baton component bodies and covers (in 1 row the contents of approx. 20 stillages)

Lot 201

Large qty of Butterfly lamp bodies and diffusers (the contents of approx. 15 stillages)

Lot 202

Miscellaneous light bodies, recessed light fittings and other component parts (the contents of approx. 11 shelves)

Lot 203

Wide range of miscellaneous lamp fitting parts including components for street lighting, etc (the contents of approx. 14 shelves)

Lot 204

Large qty of 4ft twin fluorescent light bodies, classic Prisma bodies, Butterfly lamp parts, single lamp recessed luminaires etc (the contents of approx. 20 shelves)

Lot 205

Range of various packaging including cardboard boxes, corrugated cardboard, bubble wrap, polystyrene etc

Lot 237

Reproduction mahogany 2 drawer side table on square tapered supports

Lot 238

Sepele double pedestal desk of 7 drawers on chrome base

Lot 239

Oak framed and red leather button back captains chair

Lot 240

Oak rectangular meeting table

Lot 241

3 brown steel 4 drawer filing cabinets

Lot 242

Oak pedestal desk of 7 drawers with red vinyl top by Carsons

Lot 243

The remaining furniture in the second office comprising teak office desk, teak pedestal desk, 2 4 drawer filing cabinets, 7 office chairs, 2 hat and coat stands and an exhibition display unit

Lot 244 - 249

Spare Lots

Lot 250

Power.com Intel Core i5-4440 3.10 Ghz, 8GB Ram, 500GB HDD, Win 8.1 Pro COA computer tower with flat screen monitor, keyboard and mouse

Lot 251

Power.com Intel Core i5-4440 3.10 Ghz, 8GB Ram, 500GB HDD, Win 8.1 Pro COA computer tower with flat screen monitor, keyboard and mouse

Lot 252

Power.com Intel Core i5-4440 3.10 Ghz, 8GB Ram, 500GB HDD, Win 8.1 Pro COA computer tower with flat screen monitor, keyboard and mouse

Lot 253

Power.com Intel Core i5-4440 3.10 Ghz, 8GB Ram, 500GB HDD, Win 8.1 Pro COA computer tower with flat screen monitor, keyboard and mouse

Lot 254

Power.com Intel Core i5-4440 3.10 Ghz, 8GB Ram, 500GB HDD, Win 8.1 Pro COA computer tower with flat screen monitor, keyboard and mouse

Lot 255

Power.com Intel Core i5-4440 3.10 Ghz, 8GB Ram, 500GB HDD, Win 8.1 Pro COA computer tower with flat screen monitor, keyboard and mouse

Lot 256

Power.com Intel Core i5-4440 3.10 Ghz, 8GB Ram, 500GB HDD, Win 8.1 Pro COA computer tower with flat screen monitor, keyboard and mouse

Lot 257

Dell Intel Core i5-2400 3.10 Ghz, 4GB Ram, 500GB HDD, Win 7 COA computer tower with flat screen monitor, keyboard and mouse

Lot 258

7 various Dell Dimension and Optiplex Windows XP computer towers together with 2 monitors and 2 keyboards

Lot 259

Wall mounted comms cabinet together with various patch panels and associated equipment

Lot 260

Brother and HP inkjet printer, HP laser jet fax/printer and Brother Super G3 facsimile machine (5 items)

Lot 261

Zebra Z4M Plus label printer

Lot 262

Dell Windows Vista desktop computer with monitor, keyboard, HP desktop printer and a Fellowes laminator

Lot 263

Spare lot

Lot 264

Henry vacuum cleaner, Cookworks microwave oven, LG fridge and a kitchen table and 2 chairs

OFFICE FURNITURE, EQUIPMENT & COMPUTERS

Lot 206

The contents of the staff canteen including a desk and 10 chairs together with an oak single door pedestal desk of 3 drawers

Lot 207

Siemens telephone system together with a range of handsets, receptionists handset, Dell Poweredge T605 server unit and 8 PC battery back up

Lot 208

Stratford office safe and key

Lot 209

Early timber work bench with 3 drawers

Lot 210

Contents of drawing office comprising oak occasional table, 2 desks, 5 filing cabinets, 2 pan cabinets, steel double door cupboard, teak double door cupboard etc

Lot 211

4 bays of grey bolted Dexion light duty shelving

Lot 212

6 steel double door stationary cupboards together with the contents of office stationary, labels and sundry items

Lot 213

2 photographic tripods, 2 bulbs and other accessories

Lot 214

3 Hyco oscillating pedestal fans

Lot 215

Aluminum and glazed display counter

Lot 216

7 steel double door storage cupboards

Lot 217

Qty of miscellaneous computer equipment including Dell Poweredge T605 server, keyboards, monitors, desktop towers, printers etc

Lot 218

Pool table with balls and cues

Lot 219

4 carpenters trestles and a folding blue metal sack barrow

Lot 220

Collection of 13 various framed prints

Lot 221- 229

Spare Lots

Lot 230

7 pedestal oscillating fans

Lot 231

Range of desk furniture in the main admin area comprising 12 grey finished desks, 5 Sepele tables, 2 teak sliding door cupboards and 8 office chairs

Lot 232

7 grey and brown steel 4 drawer filing cabinets

Lot 233

Range of office stationary and sundry requisites including white board, clocks, heater together with printer cartridges, pedestal fans etc

Lot 234

Reception office furniture comprising of grey L-shaped reception desk, 2 tables, pedestal, 2 swivel office chairs, mobile work trolley, hat and coat stand and oatmeal 3 seat unit chair

Lot 235

Teak finish 'The Home Office' with enclosed desk station with drawers, pigeon holes and letter racks by Newcraft Ltd

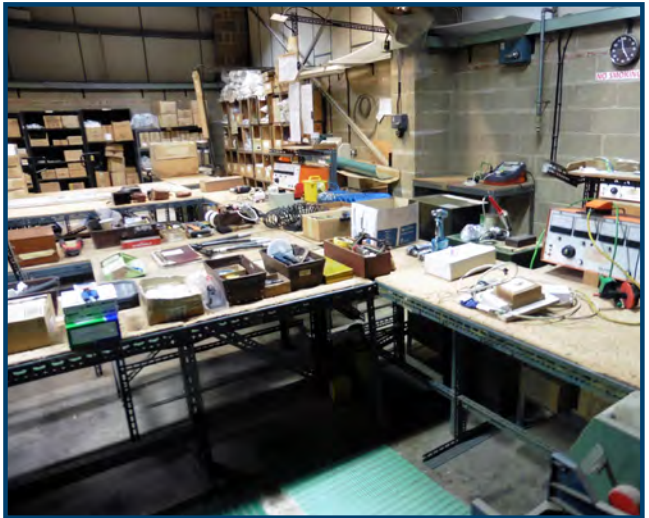
Lot 236

Oak and glazed display cabinet with fall front cupboard under

VALUATION & AUCTION ADVICE

We provide written valuations for auction advice, valuation of businesses and for accountancy and insolvency purposes.

01234 266 366 info@peacockauction.co.uk
www.peacockauction.co.uk



W&H Peacock Auctioneers & Valuers

Bedford Auction Centre 26 Newnham Street, Bedford MK40 3JR

Tel: 01234 266366 | info@peacockauction.co.uk | www.peacockauction.co.uk