

# W&H PEACOCK

AUCTIONEERS & VALUERS



## Timed Online Auction

## Garage Equipment, Tools, Stock, Office Furniture & IT

Auction: Wednesday 27th November 2019

Bids Closing 11.00am (subject to staggered timing and the ten minute rule)

**Viewing: Tuesday 26th November** 10am – 4pm

Bellamys Garage 2 Burnt Ash Hill, Lee, London, SE12 0HL

### TO BE SOLD BY TIMED AUCTION

Under Instructions from the Company Directors due to Closure of the Business

## Garage Equipment, Tools, Stock, Office Furniture & IT

### Garage Equipment and Tools

5 Hofmann Type 1, 3 tonne, scissor action car lifts; Consul H327, 4 tonne, 2 post car lift (2008), Ti Bradbury wheel supporting lift, 3 tonne, 4 post car lift (1982); Tulus PGELE, 3.2 tonne, low level scissor action car lift (2017); low level 2.5 tonne scissor action car lift

Snap-on Intelligent Diagnostic Centre with Zeus hand held unit, Bluetooth EOBD device, touch screen PC monitor and mobile cabinet with associated comprehensive test harnesses and oscilloscope function (2019); Snap-on Ethos Edge hand held diagnostic unit and harness; V-Tech smoke/gas analyser with Opus 40 unit, PC, laser printer and mobile cabinet (calibration current); ECK Ecotechnics TWIN Gas R134a / R1234YF air conditioning service station; Bosch ACS500 R134a air conditioning refill station; Tecalemit brake tester and rolling road; Lucas Hartridge

MK3 beam tester; Gartec Adblue filling station; Frontius Acctiva Seller battery charger station; Snap-on 185 Pro Mig welder; 2 Clarke workshop chargers; wheel alignment kit; Sealey YK30, 30 tonne press with tooling; Hofmann Monty 3300 tyre changer (2003); Hofmann Geodyna 4300 wheel aligner (2003); 4 vehicle wheel skates; Clarke Strong Arm engine crane; Davenset charger etc

Approx. 50 various Citroen manufacturer specialist tools and diagnostic machines

HPC Plusair SMS compressor with receiver tank and drier; Large oil tank with approx. 1,000 litres OW30 Total Quartz Ineo First oil; 3 Castrol retractable oil dispensers with Samoa digital control; assorted metal work benches some with vice, 2 trolley jacks, several sets of axle stands, 4 exhaust stands, Sealey heavy duty double ended grinder; Clarke 8" double ended grinder, 2 Draper trolleys; pallet truck; ladders etc

### Spares and Parts

A range of Citroen manufacturer spares and parts; approx. 20 various tyres

Several bays of high grade commercial single and double bay boltless racks, a range of linbins, small key lock safe

### Other

4 Rhino ceramic commercial heaters; Nilfisk vacuum cleaner; assorted car valeting chemicals; a large pair of vehicle forecourt display ramps; advertising forecourt banners

### Office & Reception Furniture & IT

Approx. 20 various PC's; Toshiba wall mount TV; 4 Samsung Galaxy tablets

24 assorted 4 drawer black filing cabinets; 17 assorted workstations with chairs; 17 black cloth reception chairs; a range of artificial pot plants; points of sale

**Viewing: Tuesday 26th November** 10am – 4pm  
Bellamys Garage 2 Burnt Ash Hill, Lee, London, SE12 OHL

[www.peacockauction.co.uk](http://www.peacockauction.co.uk)

### **Lot 1**

Hofmann Type 1, 3 tonne, scissor action car lift. Note: power and hydraulics from control unit to lifts are channelled in ground (3 phase)

### **Lot 2**

Hofmann Type 1 3 phase 3 tonne scissor action car lift  
Note: power and hydraulics from control unit to lifts are channelled in ground (3 phase)

### **Lot 3**

Hofmann Type 1 3 phase 3 tonne scissor action car lift  
Note: power and hydraulics from control unit to lifts are channelled in ground (3 phase)

### **Lot 4**

Hofmann Type 1 3 phase 3 tonne scissor action car lift  
Note: power and hydraulics from control unit to lifts are channelled in ground (3 phase)

### **Lot 5**

Hofmann Type 1 3 phase 3 tonne scissor action car lift  
Note: power and hydraulics from control unit to lifts are channelled in ground (3 phase)

### **Lot 6**

TI Bradbury, Wheel Supporting lift MKIII, 3 tonne, 4 post car lift, year 1982 with a 2 tonne cross beam hydraulic jack (3 phase)

### **Lot 7**

Consul H327, 4 tonne, 2 post car lift, year 2008 (3 phase)

### **Lot 8**

Low level 2.5 tonne, scissor action car lift (single phase)

### **Lot 9**

Tolus PGELI, 3.2 tonne, low level scissor action car lift, year 2017 (single phase)

### **Lot 10**

Snap-on Intelligent Diagnostics Centre with Zeus Scope Module M4 portable hand held unit, touchscreen monitor, various associated keys and cables on black mobile cabinet, year 2019

### **Lot 11**

Snap-on Ethos Edge vehicle diagnostic handheld portable unit with case and cable, year 2019

### **Lot 12**

Lucas-Hartridge beam tester MKIII

### **Lot 13**

Proxia 3 mobile cabinet (empty)

### **Lot 14**

V-Tech Smoke/Gas analyser with Opus 40 testing unit, PC, laser printer, on mobile cabinet with current calibration (single phase)

### **Lot 15**

ECK Eco Technics twin gas R134A/R1234YF air conditioning service station, year 2013 (single phase)

### **Lot 16**

Bosch ACS500 R134A air conditioning refill station (single phase)

### **Lot 17**

Large oil tank with approx 1000ltrs of Total Quartz Ineo First OW30 oil

### **Lot 18**

Castrol TXT retractable oil dispenser with a SAMOA digital readout

### **Lot 19**

Castrol TXT retractable oil dispenser with a SAMOA digital readout

### **Lot 20**

Castrol TXT retractable oil dispenser with a SAMOA digital readout

### **Lot 21**

Clarke VC520N Start and Charge workstop battery charger

### **Lot 22**

Clarke Strong Arm engine crane

### **Lot 23**

Clarke Strong Arm hydraulic scissor lift trolley

### **Lot 24**

Snap-on Pro Mig 185 welder, year 2005 (single phase)

### **Lot 25**

Numatic commercial floor cleaner with no electric motor

### **Lot 26**

Red trolley jack

### **Lot 27**

Black 3 tonne trolley jack

### **Lot 28**

4 small axle stands

### **Lot 29**

3 Sealey plus one other 750kg exhaust support stands

### **Lot 30**

2 4 tonne axle stands

### **Lot 31**

Gartec Adblue filling system on trolley with part barrel of Adblue

### **Lot 32**

Sealey YK30 3 tonne capacity press

### **Lot 33**

Mobile waste oil receiver

### **Lot 34**

Tecalemit DE7184 brake tester and rolling road (3 phase)

### **Lot 35**

Nilfisk Wet & Dry vacuum cleaner, Numatic vacuum cleaner, George vacuum cleaner, and a Karcher pressure washer

### **Lot 36**

A stack of black plastic bins

**Lot 37**

Total Quartz Ineo First OW30  
280litre drum of oil

**Lot 38**

2 rolls of strapping and a set of  
strapping tools

**Lot 39**

2 aluminium folding ladders, one  
with platform

**Lot 40**

Spare Lot

**Lot 41**

120cm engineer's table

**Lot 42**

120cm engineer's table with  
bench mount vice

**Lot 43**

120cm engineer's table with  
bench mount vice

**Lot 44**

120cm engineer's table with  
bench mount vice

**Lot 45**

120cm engineer's table

**Lot 46**

190cm Heavy engineer's table  
with 8 inch double ended  
grinder, bench mount vice,  
bench mount spark plug cleaner,  
and 2 injector testers

**Lot 47**

Heavy duty 125cm engineer's  
table with shelf over and bench  
mounted vice

**Lot 48**

Fronius Acctiva Seller battery  
charger with Actia PSA Mesure  
evolution battery related unit

**Lot 49**

Aromatek unit with 2 bottles of  
gas

**Lot 50**

2 Taskmaster vehicle inspection  
lamps

**Lot 51**

20 litre jerrycan and 2 5 litre  
jerrycans

**Lot 52**

Sealey double ended bench  
mount grinder

**Lot 53**

Sealey 3 kw fan heater

**Lot 54**

Contents of bench including  
welding mask, large riveter,  
angle grinder, etc

**Lot 55**

Red pallet truck

**Lot 56**

Wheel skates; a set of 4 SGS  
WS1000 680kg capacity per  
skate

**Lot 57**

Large mobile rack containing  
Citroen vehicle diagnostic  
connectors

**Lot 58**

Double ended bench grinder  
with bench

**Lot 59**

5 large advertising poles with  
bases

**Lot 60**

Pair of large steel car display  
ramps for fore court (maximum  
length, 460cm)

**Lot 61**

7 cased part toolkits for  
Citroens to include; auto  
adaptive gear boxes (AL4), front  
and rear wheel hub overhaul  
tools, boxer jumper, EXP-925,  
tap and die set, 2 further sets

**Lot 62**

6 cased part toolkits for  
Citroen's to include; chest  
for NB3 gearboxes, 4HP20  
gearboxes, XUD engine  
overhaul, front and rear wheel  
hubs overhaul tools, removal of  
rear cross member bearings

**Lot 63**

5 cased part toolkits for Citroen;  
to include repair kit for drive  
shafts and front wheel hub,  
reconditioning hubs, lower  
suspension arms and front  
suspension, overhaul engine,  
gearbox overhaul

**Lot 64**

5 cased part toolkits for  
Citroens; to include replacement  
chest for BX front axle bearings  
and front back and arm links, XM  
jumper replay, tools for timing  
diesel injection pumps, plus 2  
other sets

**Lot 65**

6 cased part toolkits for  
Citroens including air  
conditioning tooling, front  
and rear axle, jumper relays,  
Citroen diagnostic cables,  
automatic gearbox repair tools,  
compression checking diesel  
engine kits

**Lot 66**

6 part tool sets including Snap-  
on BK5500 handheld inspection  
camera in case, Snap-on cooling  
system tester, 1 Two S.1251-ZY,  
automatic halogen leak detector,  
Persio and Citroen releasing  
tools, automotive multiplexed  
networks tester

**Lot 67**

4 part tool kits comprising  
Citroen Connect 126, rear axle  
joint removal kit, engine toolkit  
plus one other

**Lot 68**

3 part tool kits for Citroen  
including engine kit, fuel circuit  
and circuit checking kit, Euro 6,  
Valve cleaning system

**Lot 69**

17 assorted part tool kits  
comprising Facom sockets and  
driver, Citroen pressure tester,  
Taskmaster brake fluid safety  
meter and assorted other

### **Lot 70**

12 part tool kits including Citroen pressure checking tools, diesel car compression tester, brake tester, etc

### **Lot 71**

PlusAir HPC Model SM8 10 bar pressure air compressor with receiver tank and dryer unit (3 phase) plus assorted hoses

### **Lot 72**

Hofmann Monty 3300 tyre changer, year 2003 (single phase)

### **Lot 73**

Hofmann Geodyna 4300 wheel aligner, year 2003 (single phase)

### **Lot 74**

Heavy Duty engineer's bench

### **Lot 75**

Time Systems TP-10 clocking-in machine

### **Lot 76**

Davenset STC10-72 battery charging unit

### **Lot 77**

Large galvanized metal salt bin with contents

### **Lot 78**

12 assorted 4 drawer filing cabinets, 2 2 drawer filing cabinets, bolted rack, open fronted cabinet

### **Lot 79**

4 assorted Red Rad ceramic heaters (single phase)

### **Lot 80**

Spare Lot

### **Lot 81**

Run of 3 bolted racks used for tyre storage

### **Lot 82**

26 mainly unused car tyres

### **Lot 83**

Folding storage crate

### **Lot 84**

100cm wide 4 tier adjustable display rack with 2 door metal cabinet

### **Lot 85**

Heavy Duty Chub key lock safe

### **Lot 86**

A range of SSI Boltless medium duty racking in the spares department each self 100kg capacity Ground Floor : 300cm running bay of multi shelves with associated Linbin racks and trays, 400cm double sided running bay (50cm deep), 300cm running bay (40cm deep), 500cm running bay (60cm deep) First floor : 200cm double sided running bay (40cm deep total), 300cm running bay (50cm depth total), 300cm running bay (50cm depth total), 300cm running bay (50cm deep)

### **Lot 87**

Entire stock and parts contents to include; wheels, tyres, brake pads, brake discs, air filters, fuel filters, vehicle decal, fuses, body trim, headlights, exhaust parts, transmission oil, gear oil, wiper blades, fixings, hose clips, hubcaps, various batteries, blue car mats, etc

### **Lot 88**

Cleaner's items including Henry vacuum cleaner, mop and buckets, and cleaner's disposable items

### **Lot 89 - 90**

Spare Lots

### **Lot 90**

spare

### **Lot 91**

V857 JKK, Seat Arosa S, 998cc petrol, First registered: 1999 MOT: 29.11.20, Miles: 58,141 miles Complete V5 showing 2 former keepers with 2 sets of keys

### **Lot 92**

Pod Point 2 station charging point

### **Lot 93 - 100**

Spare Lots

### **Lot 101**

8 Bisley black 4 drawer filing cabinets plus a 3 drawer black filing cabinet

### **Lot 102**

Office furniture in large first floor office comprising of 2 straight front slab end desks, matching 2 door cupboard, 2 wavefront desks on cantilever desks with matching single pedestal, L shaped 3 section desk on cantilever legs with 2 pedestals with 8 non-matching assorted chairs, wall mounted storage, large white board, fridge and microwave

### **Lot 103**

Computers in the large first floor office comprising of 5 Dell Optiplex 7010 computer towers, each with monitor, keyboard, and mouse plus an IBM Think Centre computer tower (hard drives will be removed)

### **Lot 104**

Pro Sound 1600 professional amplifier

### **Lot 105**

Showroom office furniture comprising of 2 wavefront desks on cantilever legs with matching pedestals, 2 radial desks on cantilever legs with matching pedestals, plus 4 cloth swivel armchairs with 2 white pigeonhole shelves, point of sale display, black open top bookcase with cupboard under, small printer table with 2 small pedestals, leaflet stand, umbrella stand, straight front desk, black desk with hanging pedestal, 2 drawer filer plus cloth swivel chairs

### Lot 106

16 black cloth grey metal frame reception chairs throughout ground floor plus low level coffee table

### Lot 107

3 artificial plants

### Lot 108

Glazed 2 sided display cabinet with contents

### Lot 109

Wall mounted Toshiba flat screen television

### Lot 110

6 Dell Optiplex 7010 computers each with monitor, keyboard, and mouse (hard drives will be removed)

### Lot 111

Service department office and parts room contents to include, 2 black desks with hanging pedestals, radial office desk on cantilever legs with pedestal, 2 wavefront desks on cantilever legs each with pedestals, 7 assorted chairs, 3 4 drawer filing cabinets, other assorted pedestals, plus 4 assorted office chairs

### Lot 112

9 Dell Optiplex 7010 computers each with monitor, keyboard, and mouse (hard drives will be removed)

### Lot 113

4 Samsung Galaxy Tab 2 small tablets

### Lot 114

Approx 12 assorted fire extinguishers with assorted first aid kits and eye wash stations

## VALUATION & AUCTION ADVICE

We provide written valuations for auction advice, valuation of businesses and for accountancy and insolvency purposes.

## W&H PEACOCK

AUCTIONEERS & VALUERS

# Auction Sales and Valuations

**Valuation, collection & auction service of individual items through to complete property clearances.**

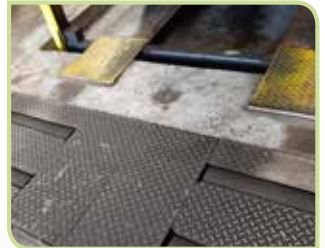
For larger or multiple items, we are happy to arrange for a valuer to visit your home or premises at your convenience. For an approximate estimate, email us with descriptions and images of your treasures to [info@peacockauction.co.uk](mailto:info@peacockauction.co.uk)



**Bedford Auction Centre**, Eastcotts Park, Wallis Way, Bedford, Bedfordshire MK42 0PE  
Tel: 01234 266 366 | [info@peacockauction.co.uk](mailto:info@peacockauction.co.uk) | [www.peacockauction.co.uk](http://www.peacockauction.co.uk)







Tel: 01234 266 366 or [info@peacockauction.co.uk](mailto:info@peacockauction.co.uk)  
[www.peacockauction.co.uk](http://www.peacockauction.co.uk)



## W&H Peacock Auctioneers & Valuers

Bedford Auction Centre, Eastcotts Park, Wallis Way, Bedford MK42 0PE

Tel: 01234 266366 | [info@peacockauction.co.uk](mailto:info@peacockauction.co.uk) | [www.peacockauction.co.uk](http://www.peacockauction.co.uk)